

TINTE
LUCIDO -MATT

QC MORE⁺

TINTE LUCIDO

COLORI NCS E STUCCHI
NCS COLOR AND GROUTS



Colori
Colours

Colori NCS
NCS Colours

Stucchi Consigliati
Suggested Grouts

KERAKOLL

MAPEI

LATICRETE

	Bianco lucido	NCS S 0300-N	 FUGABELLA COLOR 01	 WHITE 100	 BRIGHT WHITE 44
	Grigio chiaro lucido	NCS S 1002-Y	 FUGABELLA COLOR 05	 MOON WHITE 103	 BRIGHT WHITE 44
	Grigio medio lucido	NCS S 2000-N	 FUGABELLA COLOR 06	 SILVER GREY 111	 SMOKE GREY 89
	Tortora lucido	NCS S 2005-Y20R	 FUGABELLA COLOR 44	 ANCIENT WHITE 123	 MARBLE BEIGE 17
	Fango lucido	NCS S 5005-Y50R	 FUGABELLA COLOR 45	 LINEN 187	 SANDSTONE 34
	Nero lucido	NCS S 9000-N	 FUGABELLA COLOR 12	 BLACK 120	 MIDNIGHT BLACK 22
	Acquamarina lucido	NCS S 3010-G	 FUGABELLA COLOR 18	 SAGE 177	 SEA GLASS 50
	Carta da zucchero lucido	NCS S 3010-B10G	 FUGABELLA COLOR 14	 CASTLE GREY 125	 SLATE GREY 91
	Rosa lucido	NCS S 1515-Y70R	 FUGABELLA COLOR 39	 BEIGE 2000 132	 SALTILLO 92
	Giallo lucido	NCS S 1050-Y10R	 FUGABELLA COLOR 29	 YELLOW 150	 LEMONADE 07
	Verde lucido	NCS S 3040-G70Y	 FUGABELLA COLOR 17	 MUSTARD YELLOW 151	 MOSS 14
	Blu lucido	NCS S 7020-R90B	 FUGABELLA COLOR 16	 STEEL BLUE 169	 CHAMBRAY 37
	Acciaio	/	 FUGABELLA COLOR 11	 BLACK 120	 MIDNIGHT BLACK 22

QC MORE⁺

TINTE MATT

COLORI NCS E STUCCHI
NCS COLOR AND GROUTS



Colori Colours	Colori NCS NCS Colours	Stucchi Consigliati Suggested Grouts		
		KERAKOLL	MAPEI	LATICRETE
	Bianco matt NCS S 0500-N	 FUGABELLA COLOR 01	 WHITE 100	 BRIGHT WHITE 44
	Grigio chiaro matt NCS S 1002-Y	 FUGABELLA COLOR 05	 MOON WHITE 103	 BRIGHT WHITE 44
	Grigio medio matt NCS S 2000-N	 FUGABELLA COLOR 06	 SILVER GREY 111	 SMOKE GREY 89
	Tortora matt NCS S 2005-Y50R	 FUGABELLA COLOR 44	 ANCIENT WHITE 123	 MARBLE BEIGE 17
	Fango matt NCS S 5005-Y50R	 FUGABELLA COLOR 45	 LINEN 187	 SANDSTONE 34
	Nero matt NCS S 8000-N	 FUGABELLA COLOR 12	 BLACK 120	 MIDNIGHT BLACK 22
	Acquamarina matt NCS S 3010-G	 FUGABELLA COLOR 18	 SAGE 177	 SEA GLASS 50
	Carta da zucchero matt NCS S 3010-B	 FUGABELLA COLOR 14	 CASTLE GREY 125	 SLATE GREY 91
	Rosa matt NCS S 1515-Y70R	 FUGABELLA COLOR 39	 BEIGE 2000 132	 SALTILLO 92
	Giallo matt NCS S 1050-Y10R	 FUGABELLA COLOR 29	 YELLOW 150	 LEMONADE 07
	Verde matt NCS S 3040-G70Y	 FUGABELLA COLOR 17	 MUSTARD YELLOW 151	 MOSS 14
	Blu matt NCS S 7020-R90B	 FUGABELLA COLOR 16	 STEEL BLUE 169	 CHAMBRAY 37

TINTE

SCHEMI DI POSA CONSIGLIATI SUGGESTED LAYING SCHEMES



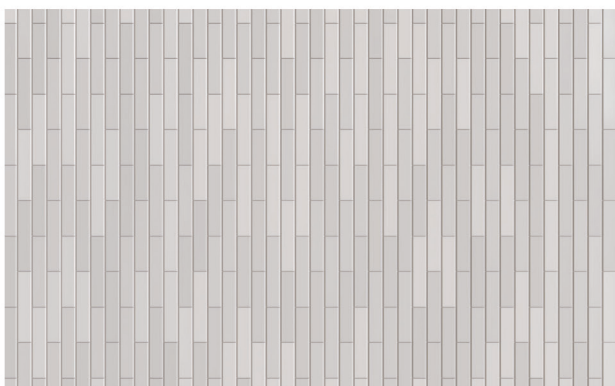
100% BIANCO

FUGABELLA COLOR 01



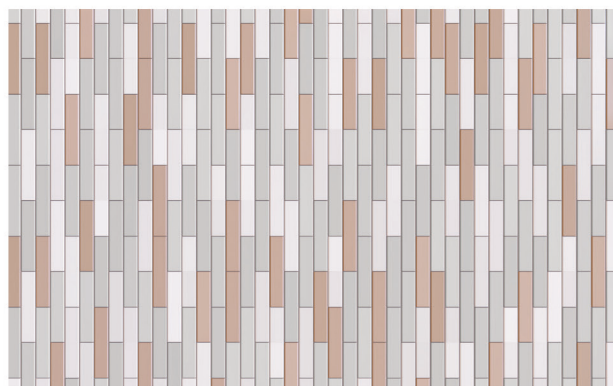
55% BIANCO | 25% GRIGIO CHIARO | 20% GRIGIO MEDIO

FUGABELLA COLOR 43



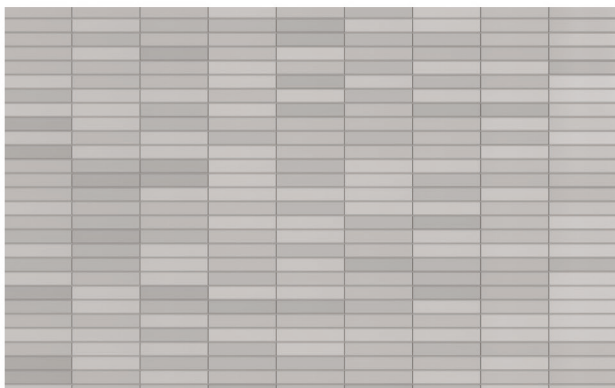
100% GRIGIO CHIARO

FUGABELLA COLOR 05



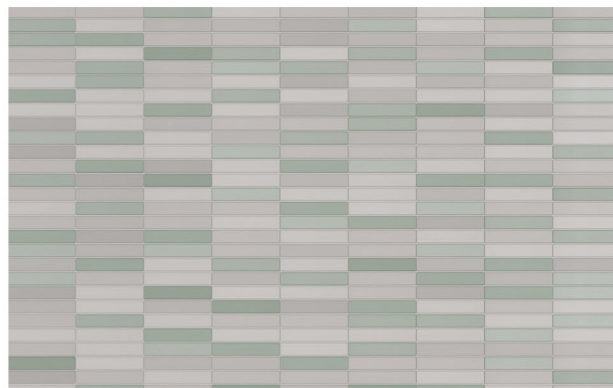
55% GRIGIO CHIARO | 25% BIANCO | 20% ROSA

FUGABELLA COLOR 05



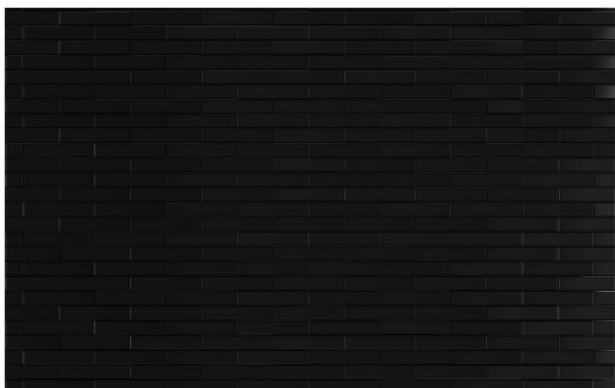
100% GRIGIO MEDIO

FUGABELLA COLOR 06



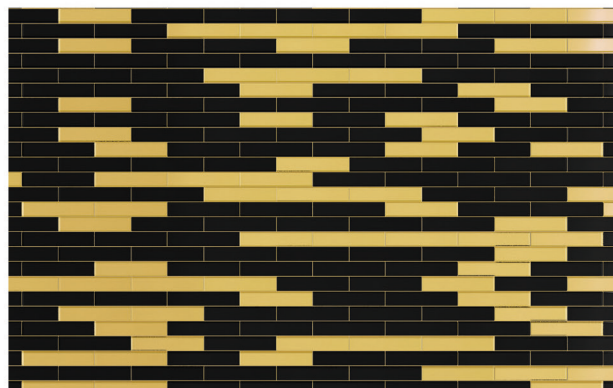
65% GRIGIO MEDIO | 35% ACQUAMARINA

FUGABELLA COLOR 06



100% NERO

FUGABELLA COLOR 12

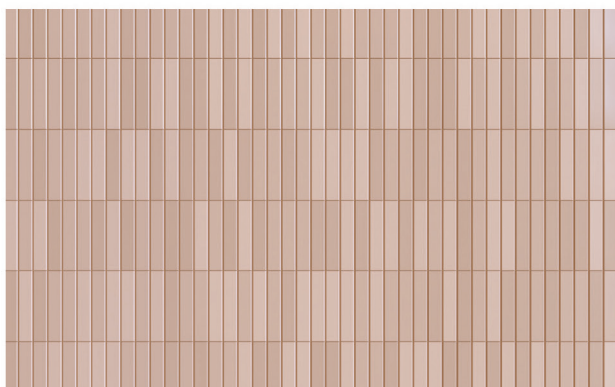


65% NERO | 35% GIALLO

FUGABELLA COLOR 29

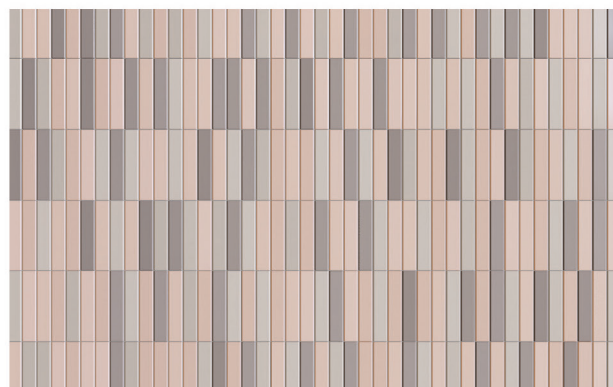
TINTE

SCHEMI DI POSA CONSIGLIATI SUGGESTED LAYING SCHEMES



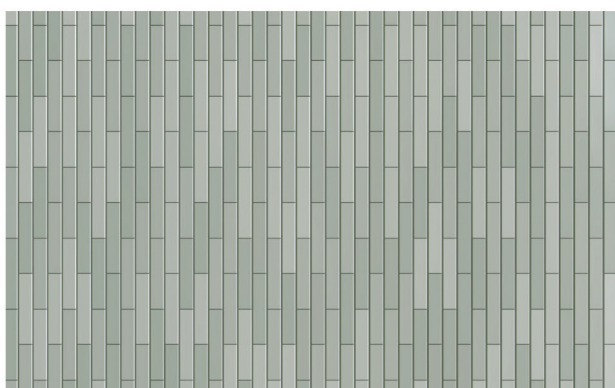
100% ROSA

FUGABELLA COLOR 39



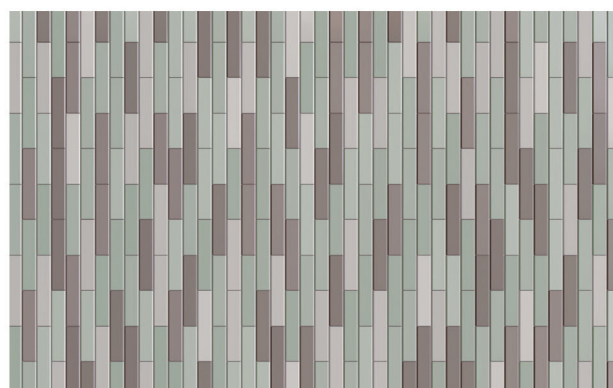
55% ROSA | 25% TORTORA | 20% FANGO

FUGABELLA COLOR 39



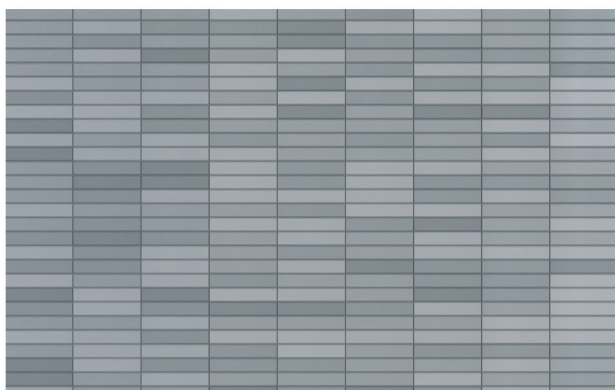
100% ACQUAMARINA

FUGABELLA COLOR 18



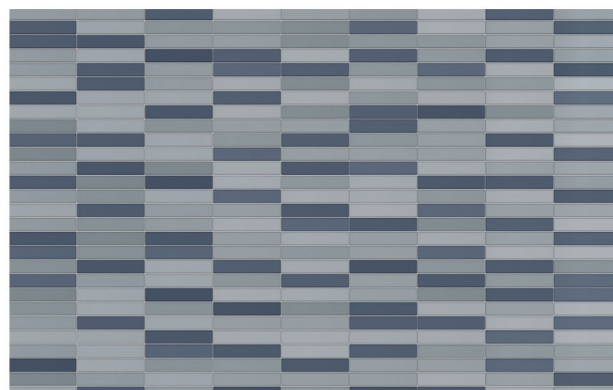
55% ACQUAMARINA | 25% FANGO | 20% GRIGIO MEDIO

FUGABELLA COLOR 18



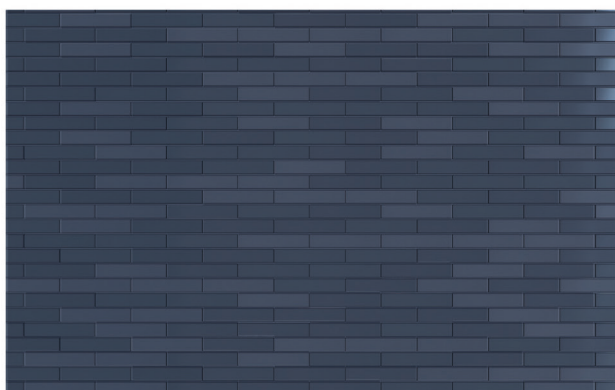
100% CARTA DA ZUCCHERO

FUGABELLA COLOR 14



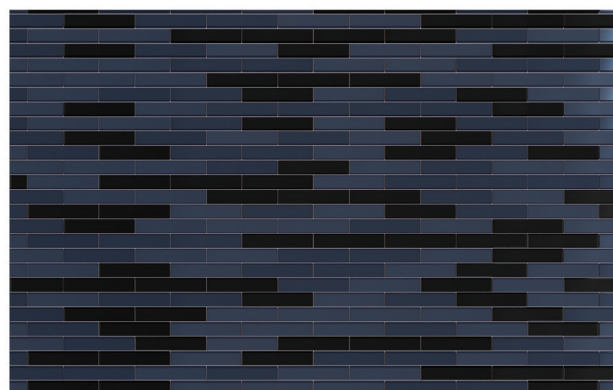
65% CARTA DA ZUCCHERO | 35% BLU

FUGABELLA COLOR 14



100% BLU

FUGABELLA COLOR 16



65% BLU | 35% NERO

FUGABELLA COLOR 16

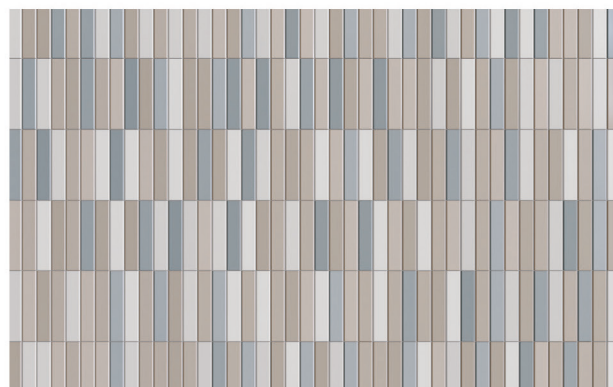
TINTE

SCHEMI DI POSA CONSIGLIATI SUGGESTED LAYING SCHEMES



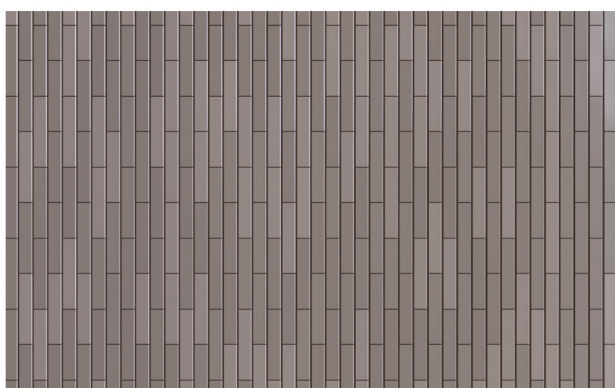
100% TORTORA

FUGABELLA COLOR 44



55% TORTORA | 25% GRIGIO CHIARO | 20% CARTA DA ZUCCHERO

FUGABELLA COLOR 44



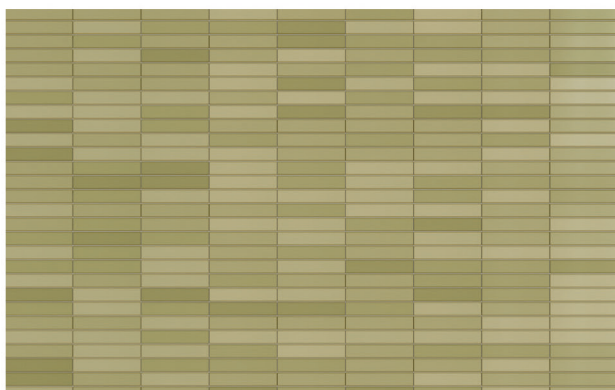
100% FANGO

FUGABELLA COLOR 45



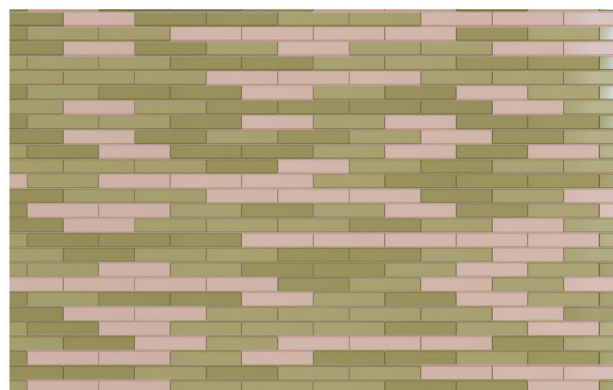
55% FANGO | 25% TORTORA | 20% BIANCO

FUGABELLA COLOR 01



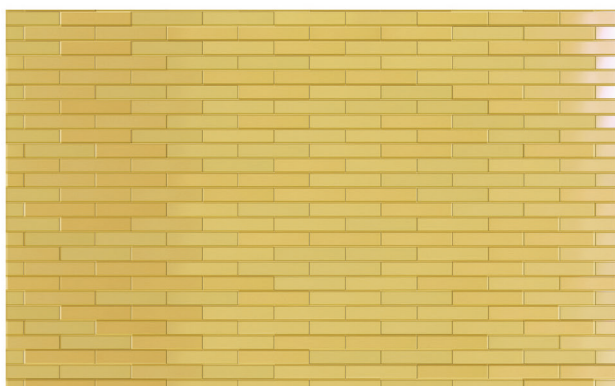
100% VERDE

FUGABELLA COLOR 18



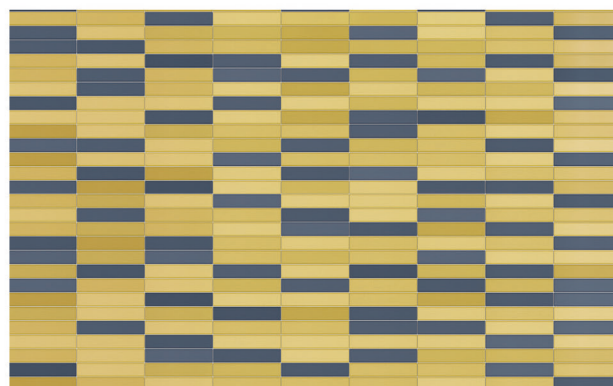
65% VERDE | 35% ROSA

FUGABELLA COLOR 18



100% GIALLO

FUGABELLA COLOR 29

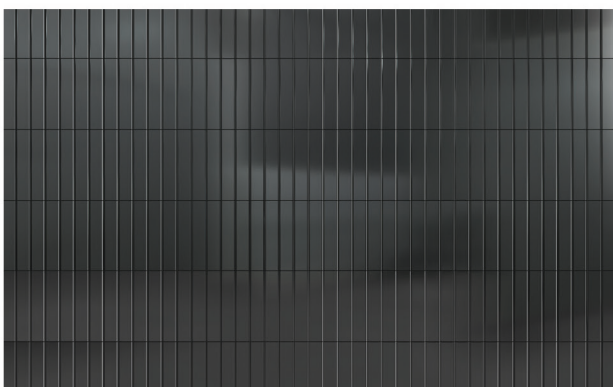


65% GIALLO | 35% BLU

FUGABELLA COLOR 29

TINTE

SCHEMI DI POSA CONSIGLIATI SUGGESTED LAYING SCHEMES



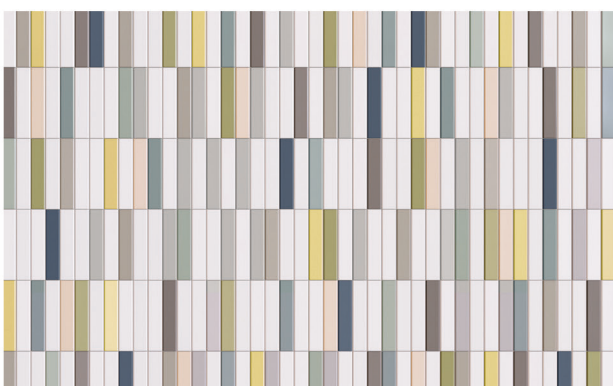
100% ACCIAIO

FUGABELLA COLOR 28



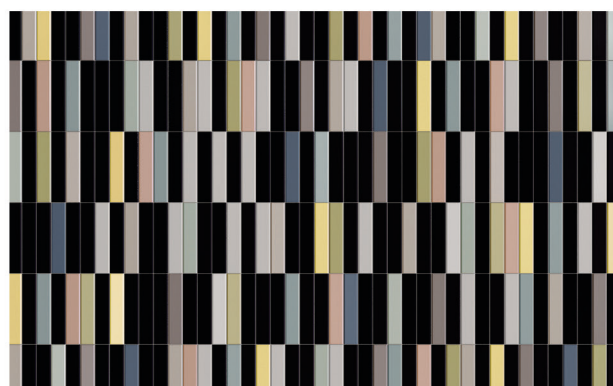
45% ACCIAIO | 35% GRIGIO MEDIO | 20% GRIGIO CHIARO

FUGABELLA COLOR 43



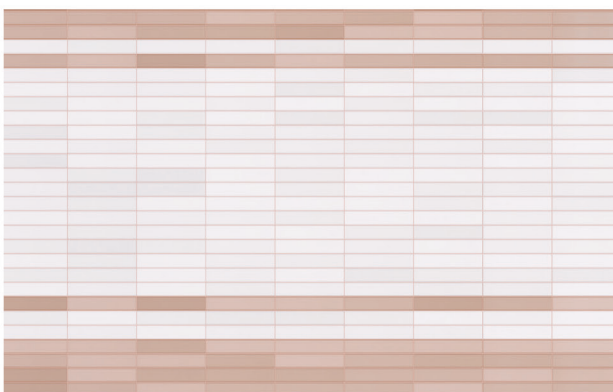
30% BIANCO | 10% FANGO | 10% GRIGIO MEDIO | 10% GIALLO | 10% VERDE | 5% TORTORA
5% ACQUAMARINA | 5% CARTA DA ZUCCHERO | 5% ROSA | 5% GRIGIO CHIARO | 5% BLU

FUGABELLA COLOR 01



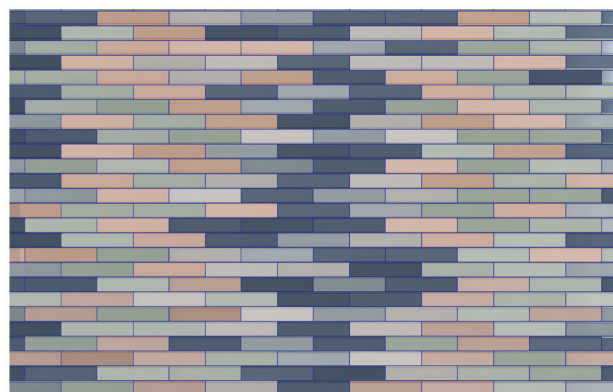
30% NERO | 10% FANGO | 10% GRIGIO CHIARO | 10% GIALLO | 10% VERDE | 5% TORTORA
5% ACQUAMARINA | 5% CARTA DA ZUCCHERO | 5% ROSA | 5% GRIGIO MEDIO | 5% BLU

FUGABELLA COLOR 05



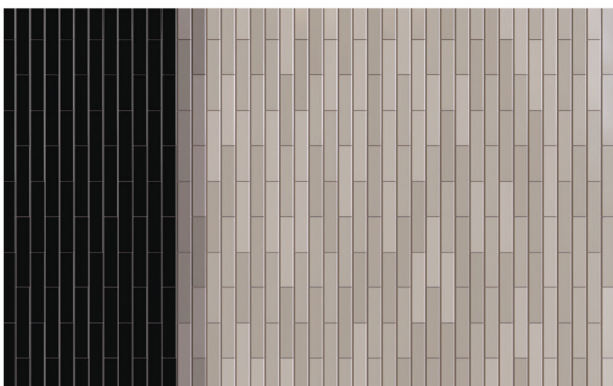
70% BIANCO | 30% ROSA

FUGABELLA COLOR 39



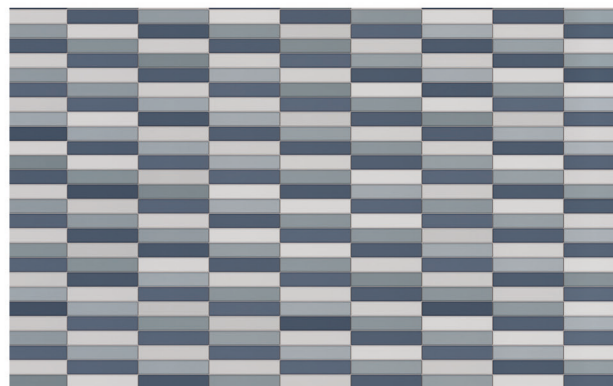
20% CARTA DA ZUCCHERO, 20% BLU, 15% ACQUAMARINA, 15% ROSA,
15% GRIGIO CHIARO, 15% GRIGIO MEDIO

FUGABELLA COLOR 16



25% NERO | 5% FANGO | 60% TORTORA

FUGABELLA COLOR 44



35% BLU | 35% CARTA DA ZUCCHERO | 30% GRIGIO CHIARO

FUGABELLA COLOR 14

Informazioni | Info

Rivestimento in pasta bianca
White body wall tiles

Stonalizzato
Shade variation
V1/V3

Matt/Lucido
Matt/Glossy

Materiale riciclato
Recycled Content
69%

Stonalizzato
Shade variation

V1 nero lucido/matt, acciaio lucido,
bianco lucido/matt

V3 grigio chiaro lucido/matt, grigio medio lucido/matt
tortora lucido/matt, fango lucido/matt, rosa lucido/matt
acquamarina lucido/matt, carta da zucchero lucido/matt
blu lucido/matt, giallo lucido/matt, verde lucido/matt

Dimensioni | Sizing

Piastrelle non rettificate | Non-rectified tiles
Carreaux non rectifiés

5cm
2"
25cm - 10"

9MM

Fuga | Joint

Fuga minima 2mm | Minimum joint 2mm
Joint d'au moins 2mm

Posa | Posa

Istruzioni di posa per piastrelle con variazione cromatica:
si consiglia di prelevare le piastrelle da più scatole contemporaneamente
per garantire una corretta stonalizzazione che esalti la variabilità
e la casualità della superficie finita.

Laying instructions for tiles with colour variation:
it is recommended to take tiles from several boxes at a time
to ensure proper shade variation that enhances the variability
and randomness of the finished surface.

Il est recommandé de prélever des carreaux de plusieurs boîtes
en même temps pour garantir une pose plus homogène améliorant
ainsi la variabilité et le caractère aléatoire de la surface finie.

Imballi | Packing

ARTICOLO ITEM	FORMATO SIZE	SCATOLA BOX			PALLET PALLET			
		PZ	MQ	KG	BOX	PZ	MQ	KG
Tinte matt	5x25cm 2x10"	40	0,50	7,10	90	3.600	45,00	660
Tinte lucido	5x25cm 2x10"	36	0,50	7,10	90	3.600	45,00	660

CARATTERISTICHE TECNICHE TECHNICAL FEATURES

		RIVESTIMENTO IN PASTA BIANCA WHITE BODY WALL TILES		
		NORMA standard	VALORE RICHIESTO required standards	TINTE
DIMENSIONI dimensions	LUNGHEZZA E LARGHEZZA length and width	UNI-EN ISO 10545-2	± 0.5%	CONFORME compliant
	SPESSORE thickness	UNI-EN ISO 10545-2	± 10%	CONFORME compliant
	RETTILINEITÀ DEGLI SPIGOLI straightness of sides	UNI-EN ISO 10545-2	± 0.3%	CONFORME compliant
	ORTOGONALITÀ rectangularity	UNI-EN ISO 10545-2	± 0.5%	CONFORME compliant
	PLANARITÀ - CURVATURA DEL CENTRO surface flatness – centre curvature	UNI-EN ISO 10545-2	± 0.5% - 0.3%	CONFORME compliant
RESISTENZA ALLA FLESSIONE bending strenght	PLANARITÀ - CURVATURA DELLO SPIGOLO surface flatness – edge curvature	UNI-EN ISO 10545-2	± 0.5% - 0.3%	CONFORME compliant
	PLANARITÀ - SVERGOLAMENTO surface flatness – warpage	UNI-EN ISO 10545-2	± 0.5%	CONFORME compliant
	CARICO DI ROTTURA breaking of rupture	UNI-EN ISO 10545-4	> 600 N (≥ 7,5 MM) > 200 N (< 7,5 MM)	CONFORME compliant
	MODULO DI ROTTURA modulus of rupture	UNI-EN ISO 10545-4	> 12 N/MM ² (≥ 7,5 MM) > 15 N/MM ² (< 7,5 MM)	CONFORME compliant
	ASSORBIMENTO D'ACQUA water absorption	UNI-EN ISO 10545-3	> 10 %	CONFORME compliant
	RESISTENZA DEI COLORI ALLA LUCE colour resistance to light	DIN 51094	-	RESISTENTE resistant
	COEFFICIENTE DI DILATAZIONE TERMICA LINEARE (100° C) linear thermal expansion coefficient (100° C)	UNI-EN ISO 10545-8	-	METODO DISPONIBILE test method available
	RESISTENZA AGLI SBALZI TERMICI thermal shock resistance	UNI-EN ISO 10545-9	-	RESISTENTE* resistant
	RESISTENZA AL CAVILLO crazing resistance	UNI-EN ISO 10545-11	-	RESISTENTE* resistant
	RESISTENZA ALLE MACCHIE resistance to stains	UNI-EN ISO 10545-14	CLASSE 3 MIN.	CLASSE 5* Class 5
	RESISTENZA CHIMICA chemical resistance	UNI-EN ISO 10545-13	GB MIN.	GARANTITA* guaranteed (GA GLA GHA)
	PIOMBO E CADMIO RILASCIATI lead and cadmium given off	UNI-EN ISO 10545-15	-	METODO DISPONIBILE test method available
	REAZIONE AL FUOCO reaction to fire	EN 13501-1	-	A1
	VARIAZIONE DI TONO shade variations	-	-	BIANCO, NERO, ACCIAIO: V1 bianco, nero, acciaio: v1 ALTRI COLORI: V3 other colors: v3

RIVESTIMENTO IN MONOPOROSA PASTA BIANCA: Piastrelle di ceramica pressate a secco con assorbimento d'acqua Eb > 10 %. Caratteristiche di qualità secondo i test di controllo previsti dalla norma EN14411:2013 appendice L gruppo BIII GL.
GLAZED WHITE-BODIED POROUS SINGLE-FIRED WALL TILES: Dry-pressed ceramic tiles with water absorption Eb > 10 %. Quality specification, according to control test of EN14411:2013 appendix L group BIII GL.

*AD ECCEZIONE DEI COLORI METALLIZZATI (oro, bronzo, acciaio) EXCLUDING METALLIC COLORS (oro, bronzo, acciaio)

Consultare la guida per l'installazione e la manutenzione a pag. 242 - Check the installation and maintenance guide on page 244