

OLTRE

QC MORE<sup>+</sup>

# OLTRE

COLORI NCS E STUCCHI  
NCS COLOR AND GROUTS



## Colori Colours

## Colori NCS NCS Colours

## Stucchi Consigliati Suggested Grouts

KERAKOLL

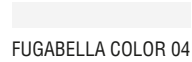
MAPEI

LATICRETE



Bianco

NCS S 0500-N



FUGABELLA COLOR 04



MOON WHITE 103



BRIGHT WHITE 44



Nero

NCS S 7500-N



FUGABELLA COLOR 11



ANTHRACITE 114

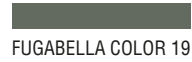


RAVEN 45

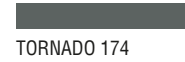


Verde

NCS S 6010-G10Y



FUGABELLA COLOR 19



TORNADO 174



BOSTON FERN 33



Cotto

NCS S 3030-Y50R



FUGABELLA COLOR 40



TERRA DI SIENA 145



CINNAMON 47



Blu

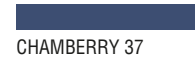
NCS S 6010-R90B



FUGABELLA COLOR 16



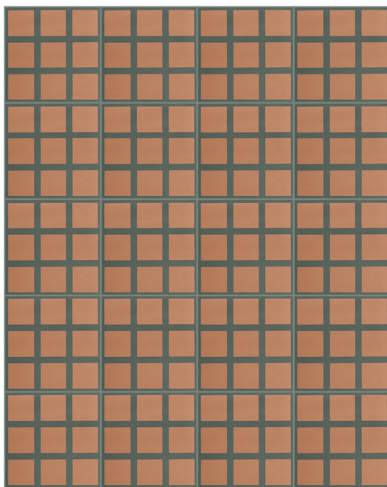
STEEL BLUE 169



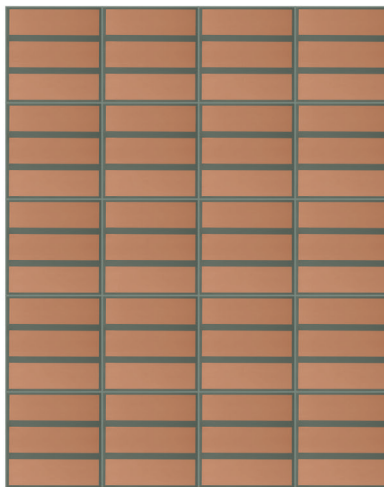
CHAMBERRY 37

# OLTRE VERDE.COTTO

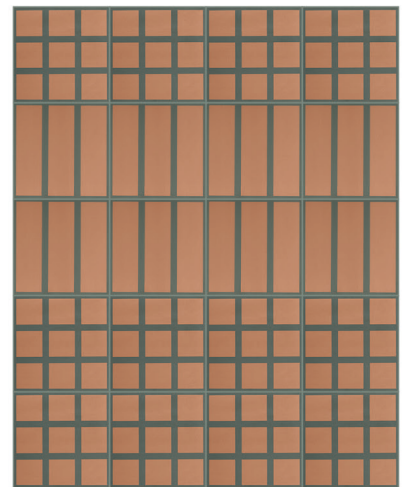
## SCHEMI DI POSA CONSIGLIATI SUGGESTED LAYING SCHEMES



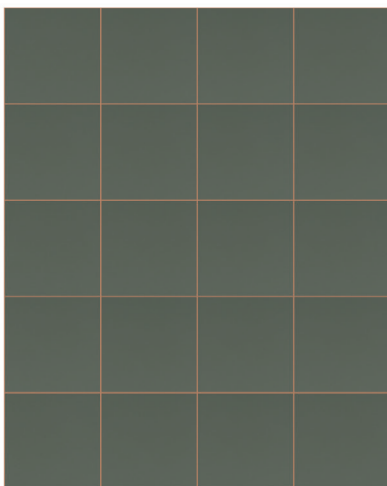
FUGABELLA COLOR 19  
100% OLTRE9 VERDE.COTTO



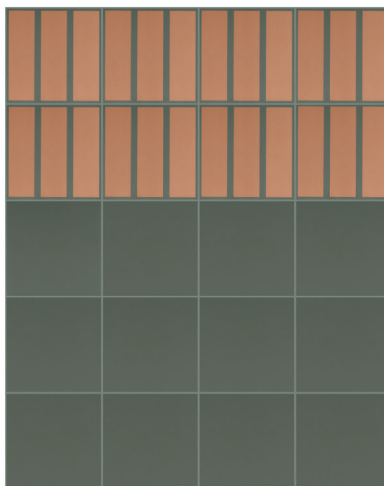
FUGABELLA COLOR 19  
100% OLTRE3 VERDE.COTTO



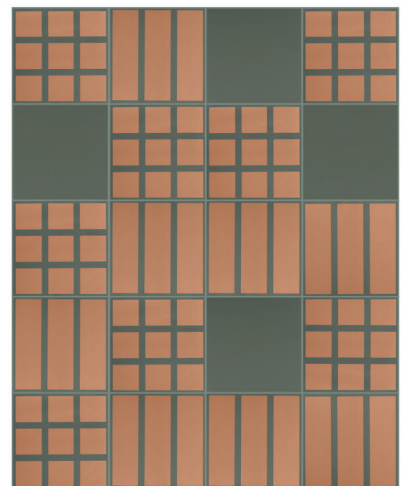
FUGABELLA COLOR 19  
60% OLTRE9 VERDE.COTTO | 40% OLTRE3 VERDE.COTTO



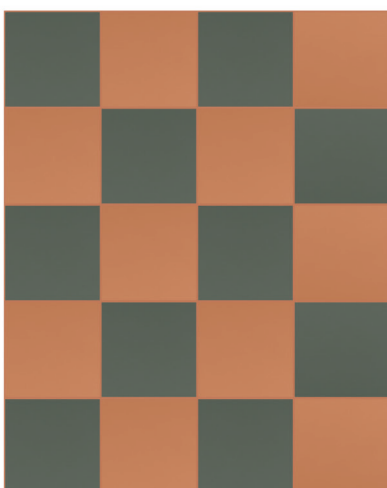
CINNAMOM 47  
100% BASE VERDE



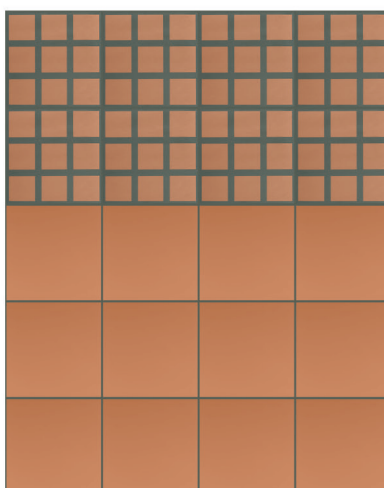
FUGABELLA COLOR 19  
60% BASE VERDE | 40% OLTRE3 VERDE.COTTO



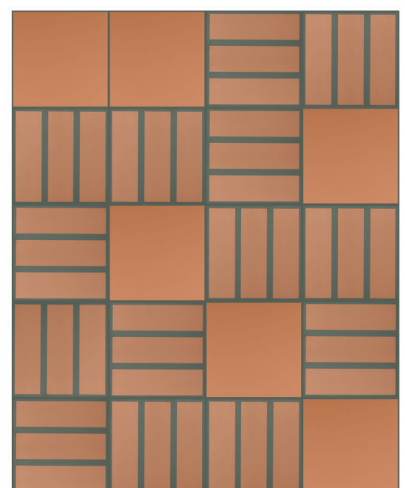
FUGABELLA COLOR 19  
20% BASE VERDE | 40% OLTRE9 VERDE.COTTO | 40% OLTRE3 VERDE.COTTO



CINNAMOM 47  
50% BASE VERDE | 50% BASE COTTO



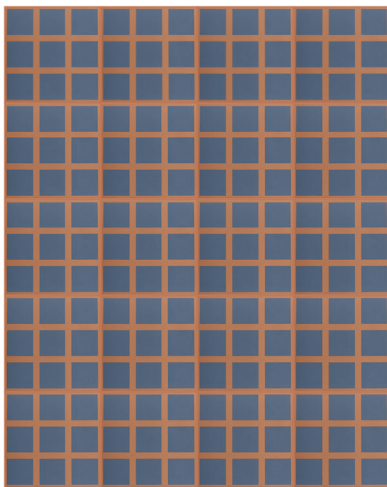
TORNADO 174  
60% BASE COTTO | 40% OLTRE9 VERDE.COTTO



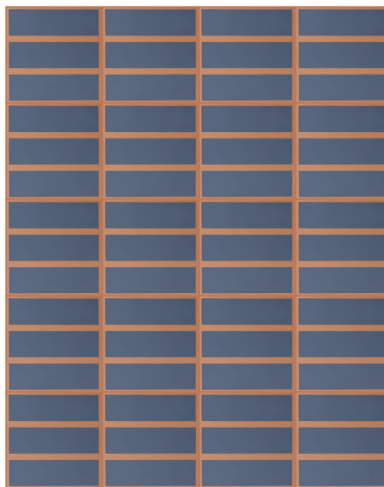
TORNADO 174  
30% BASE COTTO | 70% OLTRE9 VERDE.COTTO

# OLTRE COTTO.BLU

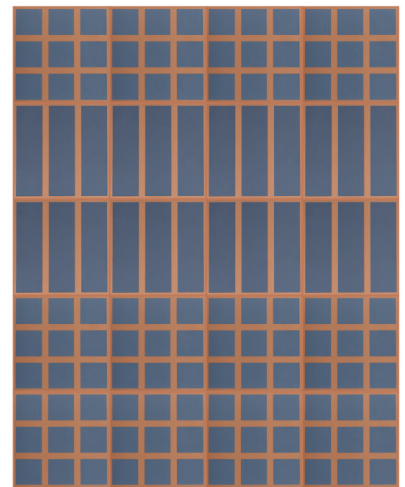
## SCHEMI DI POSA CONSIGLIATI SUGGESTED LAYING SCHEMES



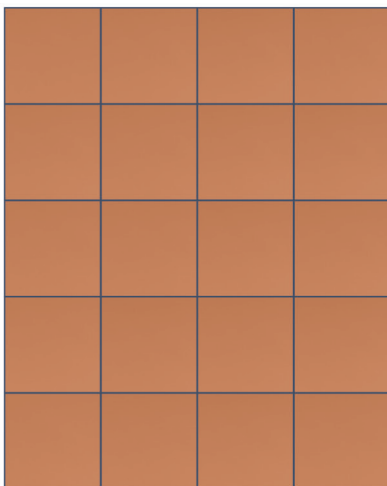
CINNAMOM 47  
100% OLTRE9 COTTO.BLU



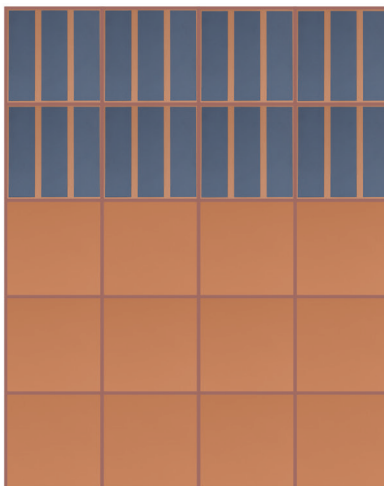
CINNAMOM 47  
100% OLTRE3 COTTO.BLU



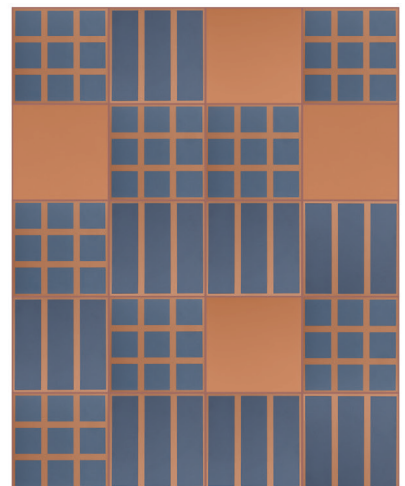
CINNAMOM 47  
60% OLTRE9 COTTO.BLU | 40% OLTRE3 COTTO.BLU



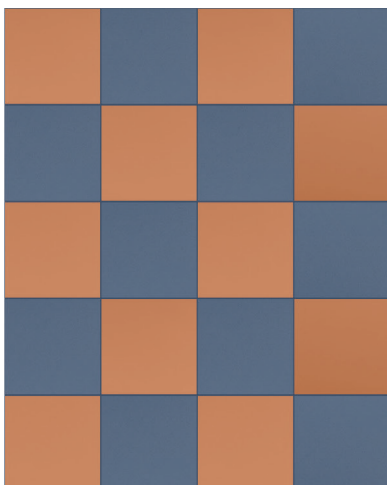
FUGABELLA COLOR 16  
100% BASE COTTO



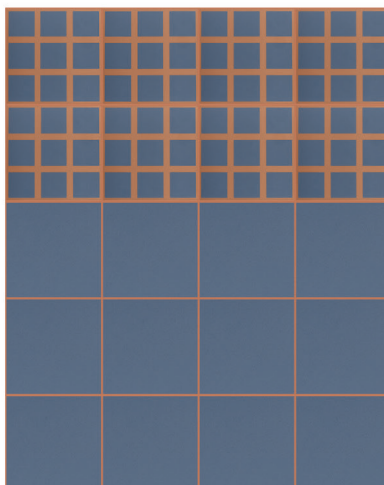
FUGABELLA COLOR 40  
60% BASE COTTO | 40% OLTRE3 COTTO.BLU



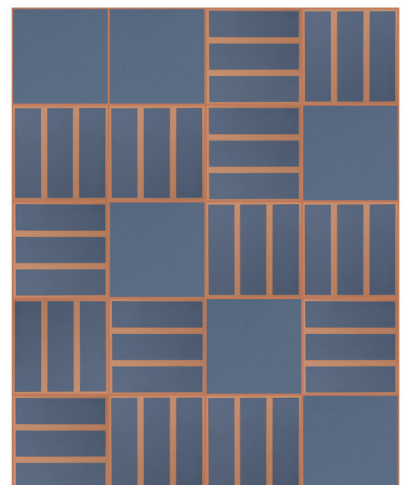
FUGABELLA COLOR 40  
20% BASE COTTO | 40% OLTRE9 COTTO.BLU | 40% OLTRE3 COTTO.BLU



FUGABELLA COLOR 16  
50% BASE BLU | 50% BASE COTTO



CINNAMOM 47  
60% BASE BLU | 40% OLTRE9 COTTO.BLU

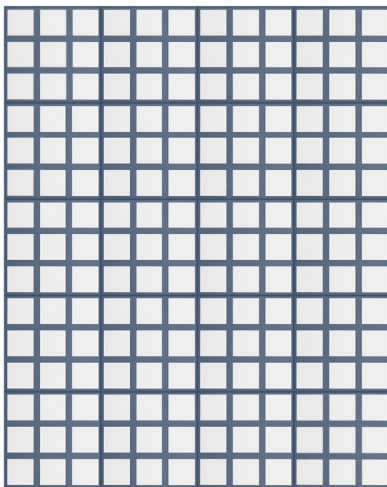


CINNAMOM 47  
30% BASE BLU | 70% OLTRE3 COTTO.BLU

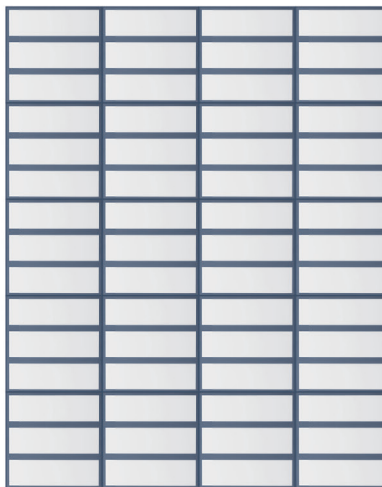
# OLTRE

BLU.BIANCO

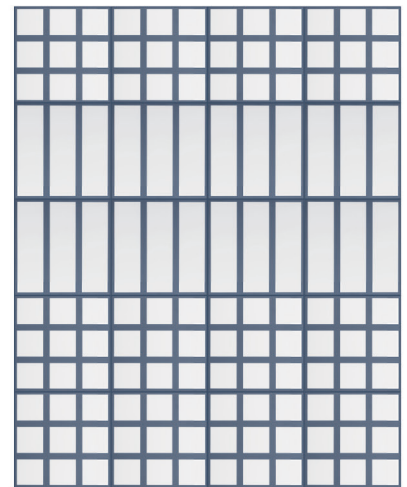
## SCHEMI DI POSA CONSIGLIATI SUGGESTED LAYING SCHEMES



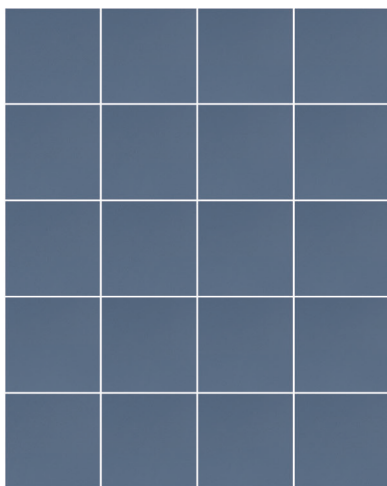
CHAMBRAY 37  
100% OLTRE9 BLU BIANCO



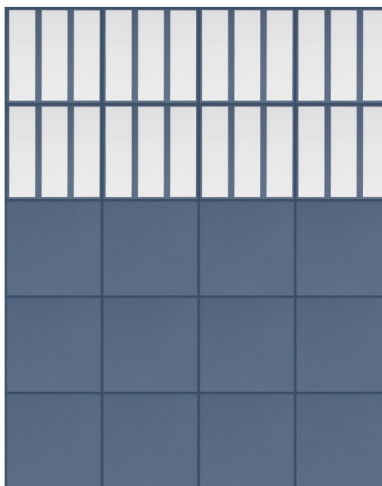
CHAMBRAY 37  
100% OLTRE3 BLU BIANCO



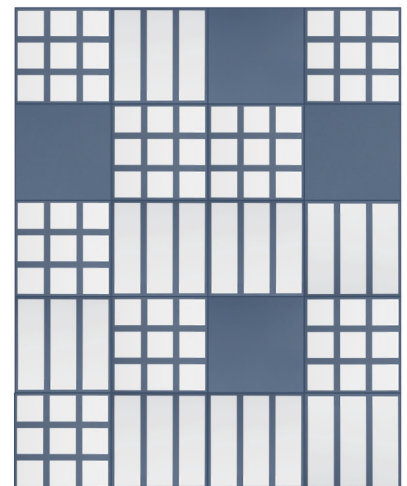
CHAMBRAY 37  
60% OLTRE9 BLU BIANCO | 40% OLTRE3 BLU BIANCO



FUGABELLA COLOR 04  
100% BASE BLU



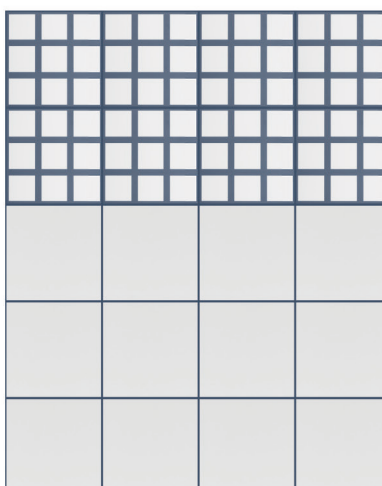
CHAMBRAY 37  
60% BASE BLU | 40% OLTRE3 BLU BIANCO



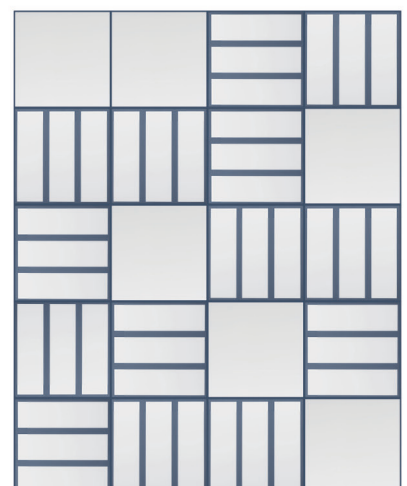
CHAMBRAY 37  
20% BASE BLU | 40% OLTRE9 BLU BIANCO | 40% OLTRE3 BLU BIANCO



FUGABELLA COLOR 04  
50% BASE BLU | 50% BASE BIANCO



CHAMBRAY 37  
60% BASE BIANCO | 40% OLTRE9 BLU BIANCO

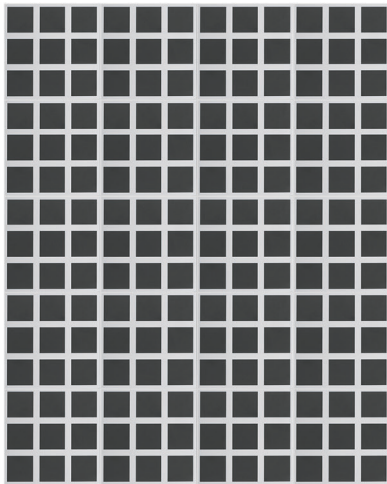


CHAMBRAY 37  
30% BASE BIANCO | 70% OLTRE3 BLU BIANCO

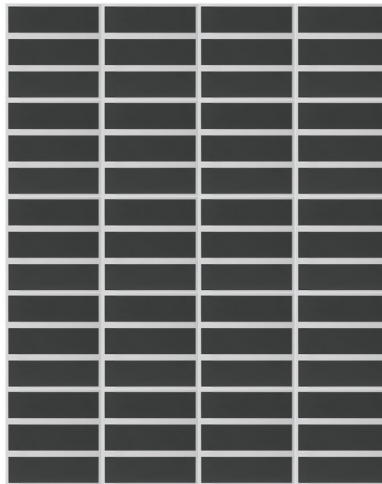
# OLTRE

BIANCO.NERO

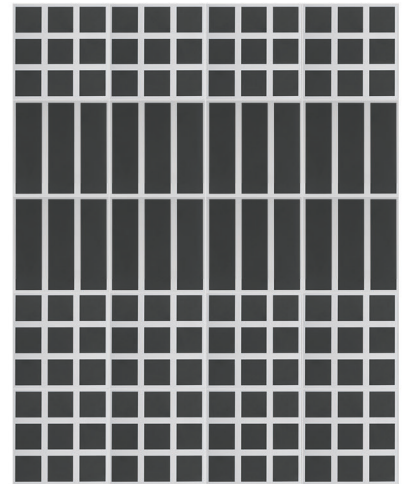
## SCHEMI DI POSA CONSIGLIATI SUGGESTED LAYING SCHEMES



FUGABELLA COLOR 04  
100% OLTRE9 BIANCO.NERO



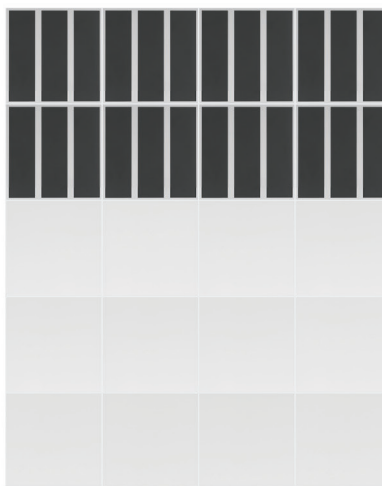
FUGABELLA COLOR 04  
100% OLTRE3 BIANCO.NERO



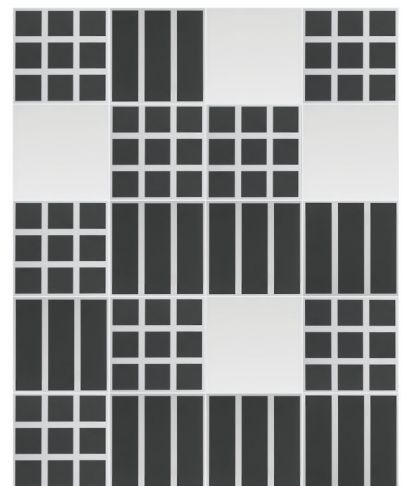
FUGABELLA COLOR 04  
60% OLTRE9 BIANCO.NERO | 40% OLTRE3 BIANCO.NERO



FUGABELLA COLOR 11  
100% BASE BIANCO



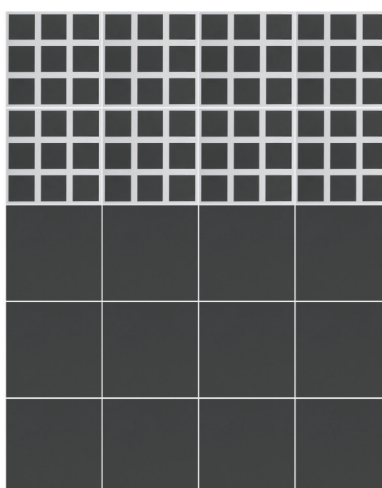
FUGABELLA COLOR 04  
60% BASE BIANCO | 40% OLTRE3 BIANCO.NERO



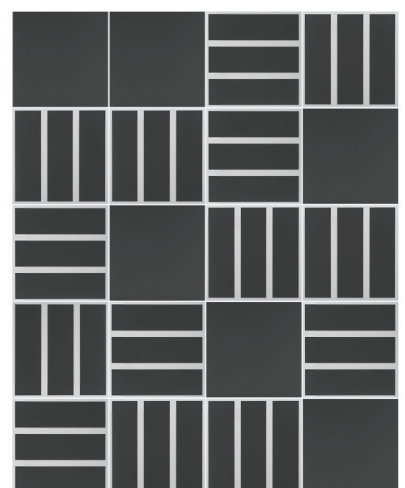
FUGABELLA COLOR 04  
20% BASE BIANCO | 40% OLTRE9 BIANCO.NERO | 40% OLTRE3 BIANCO.NERO



FUGABELLA COLOR 11  
50% BASE NERO | 50% BASE BIANCO



FUGABELLA COLOR 04  
60% BASE NERO | 40% OLTRE9 BIANCO.NERO

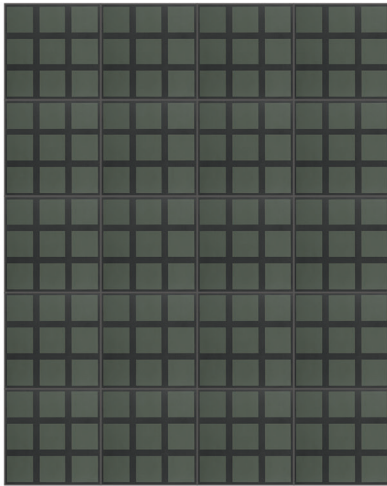


FUGABELLA COLOR 04  
30% BASE NERO | 70% OLTRE9 BIANCO.NERO

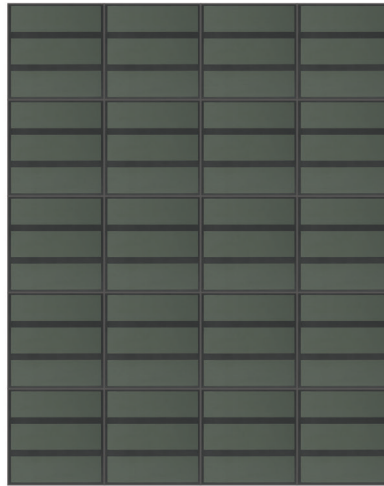
# OLTRE

NERO.VERDE

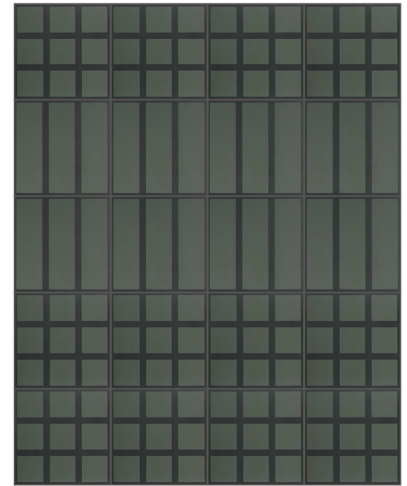
## SCHEMI DI POSA CONSIGLIATI SUGGESTED LAYING SCHEMES



FUGABELLA COLOR 11  
100% OLTRE9 NERO VERDE



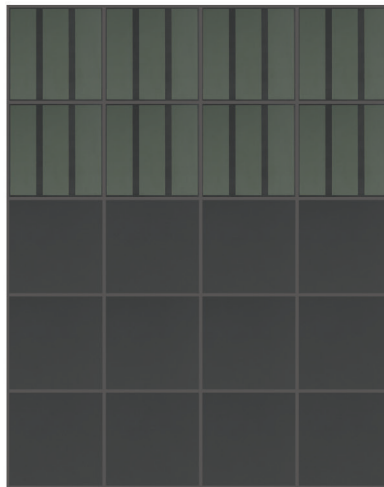
FUGABELLA COLOR 11  
100% OLTRE3 NERO VERDE



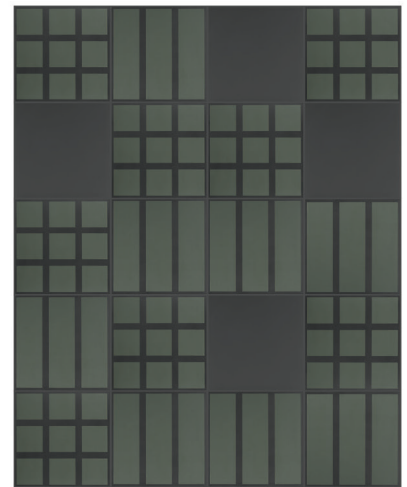
FUGABELLA COLOR 11  
60% OLTRE9 NERO VERDE | 40% OLTRE3 NERO VERDE



BOSTON FERN 33  
100% BASE NERO



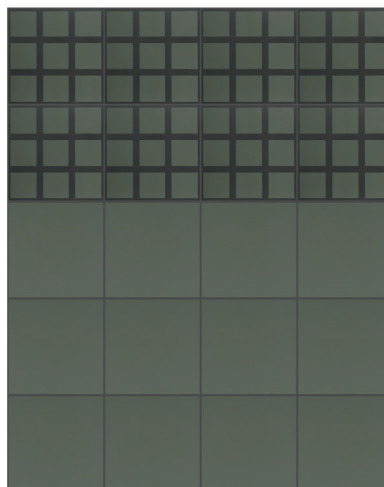
ANTHRACITE 114  
60% BASE NERO | 40% OLTRE3 NERO VERDE



ANTHRACITE 114  
20% BASE NERO | 40% OLTRE9 NERO VERDE | 40% OLTRE3 NERO VERDE



FUGABELLA COLOR 19  
50% BASE NERO | 50% BASE VERDE



RAVEN 45  
60% BASE VERDE | 40% OLTRE9 NERO VERDE



FUGABELLA COLOR 11  
30% BASE VERDE | 70% OLTRE3 NERO VERDE

## Informazioni | Info

Gres porcellanato  
Porcelain stoneware



V1

Monocromatico\Texture  
Monochromatic\Texture



Matt  
Matt

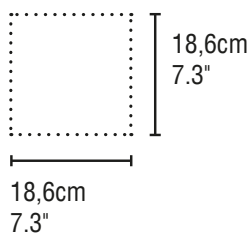


43%

Materiale riciclato  
Recycled Content

## Dimensioni | Sizing

Piastrelle non rettificate soggette a lievi differenze di calibro.  
Non-rectified tiles subject to slight differences in caliber.  
Carreaux non rectifiés pouvant comporter de légères différences de calibre.



8MM

## Fuga | Joint

Fuga minima 2mm. Compensare differenze di calibro con la fuga.  
Minimum 2mm joint. Compensate for differences in caliber with the joint.  
Joint d'au moins 2mm. Compenser les différences de calibre avec le joint.

## Imballi | Packing

ARTICOLO   ITEM	FORMATO   SIZE	SCATOLA   BOX			PALLET   PALLET			
		PZ	MQ	KG	BOX	PZ	MQ	KG
oltre base	18,6X18,6cm   7.3"x7.3"	13	0,45	8,3	108	1404	48,6	920
oltre3	18,6X18,6cm   7.3"x7.3"	13	0,45	8,3	108	1404	48,6	920
oltre9	18,6X18,6cm   7.3"x7.3"	13	0,45	8,3	108	1404	48,6	920



## CARATTERISTICHE TECNICHE TECHNICAL FEATURES

		GRES PORCELLANATO SMALTATO GLAZED PORCELAIN		
		NORMA standard	VALORE RICHIESTO required standards	OLTRE
DIMENSIONI dimensions	LUNGHEZZA E LARGHEZZA length and width	UNI-EN ISO 10545-2	± 0.6%	CONFORME compliant
	SPESORE thickness	UNI-EN ISO 10545-2	± 5%	CONFORME compliant
	RETTILINEITÀ DEGLI SPIGOLI straightness of sides	UNI-EN ISO 10545-2	± 0.5%	CONFORME compliant
	ORTOGONALITÀ rectangularity	UNI-EN ISO 10545-2	± 0.5%	CONFORME compliant
	PLANARITÀ - CURVATURA DEL CENTRO surface flatness – centre curvature	UNI-EN ISO 10545-2	± 0.5%	CONFORME compliant
	PLANARITÀ - CURVATURA DELLO SPIGOLO surface flatness – edge curvature	UNI-EN ISO 10545-2	± 0.5%	CONFORME compliant
	PLANARITÀ - SVERGOLAMENTO surface flatness – warpage	UNI-EN ISO 10545-2	± 0.5%	CONFORME compliant
RESISTENZA ALLA FLESSIONE bending strenght	CARICO DI ROTTURA breaking strenght	UNI-EN ISO 10545-4	> 1300 N (≥ 7,5 MM) > 700 N (< 7,5 MM)	CONFORME compliant
	MODULO DI ROTTURA modulus of rupture	UNI-EN ISO 10545-4	> 35 N/MM² (≥ 7,5 MM)	CONFORME compliant
	RESISTENZA ALL'ABRASIONE DELLE PIASTRELLE SMALTATE resistance to abrasion of glazed tiles	UNI-EN ISO 10545-7	-	PEI 3: TUTTI I COLORI pei 3: all colors PEI 2: NERO pei 2: black
	ASSORBIMENTO D'ACQUA water absorption	UNI-EN ISO 10545-3	≤ 0,5 %	CONFORME compliant
	RESISTENZA DEI COLORI ALLA LUCE colour resistance to light	DIN 51094	-	RESISTENTE resistant
	COEFFICIENTE DI DILATAZIONE TERMICA LINEARE (100° C) linear thermal expansion coefficient (100° C)	UNI-EN ISO 10545-8	-	METODO DISPONIBILE test method available
	RESISTENZA AGLI SBALZI TERMICI thermal shock resistance	UNI-EN ISO 10545-9	-	RESISTENTE resistant
	RESISTENZA AL GELO frost resistance	UNI-EN ISO 10545-12	-	RESISTENTE resistant
	RESISTENZA AL CAVILLO crazing resistance	UNI-EN ISO 10545-11	-	RESISTENTE resistant
	RESISTENZA ALLE MACCHIE resistance to stains	UNI-EN ISO 10545-14	CLASSE 3 MIN.	CLASSE 5 Class 5
	RESISTENZA CHIMICA chemical resistance	UNI-EN ISO 10545-13	GB MIN.	GARANTITA guaranteed (GA GLA GHA)
	PIOMBO E CADMIO RILASCIATI lead and cadmium given off	UNI-EN ISO 10545-15	-	METODO DISPONIBILE test method available
	REAZIONE AL FUOCO reaction to fire	EN 13501-1	-	A <sub>1,FL</sub> -A1
	ANGOLO CRITICO DI SLITTAMENTO slip resistance (ramp test)	DIN 51130	-	R9
	RESISTENZA ALLO SLITTAMENTO slip resistance (pendulum test)	UNI-EN ISO 16165 C	-	37WET
	RESISTENZA ALLO SLITTAMENTO slip resistance (pendulum test)	AS/NZS 4586	-	P3
	COEFFICIENTE DINAMICO DI ATTRITO SUL BAGNATO (DCOF) wet dynamic coefficient of friction (DCOF)	ANSI A137.1-BOT 3000	≥ 0.42	CONFORME compliant
	VARIAZIONE DI TONO shade variations	-	-	V1